



EXPERT ENGINEERING SERVICES

FOR ALL YOUR CRITICAL
SEALING & SELF-LUBRICATED
BEARING APPLICATIONS

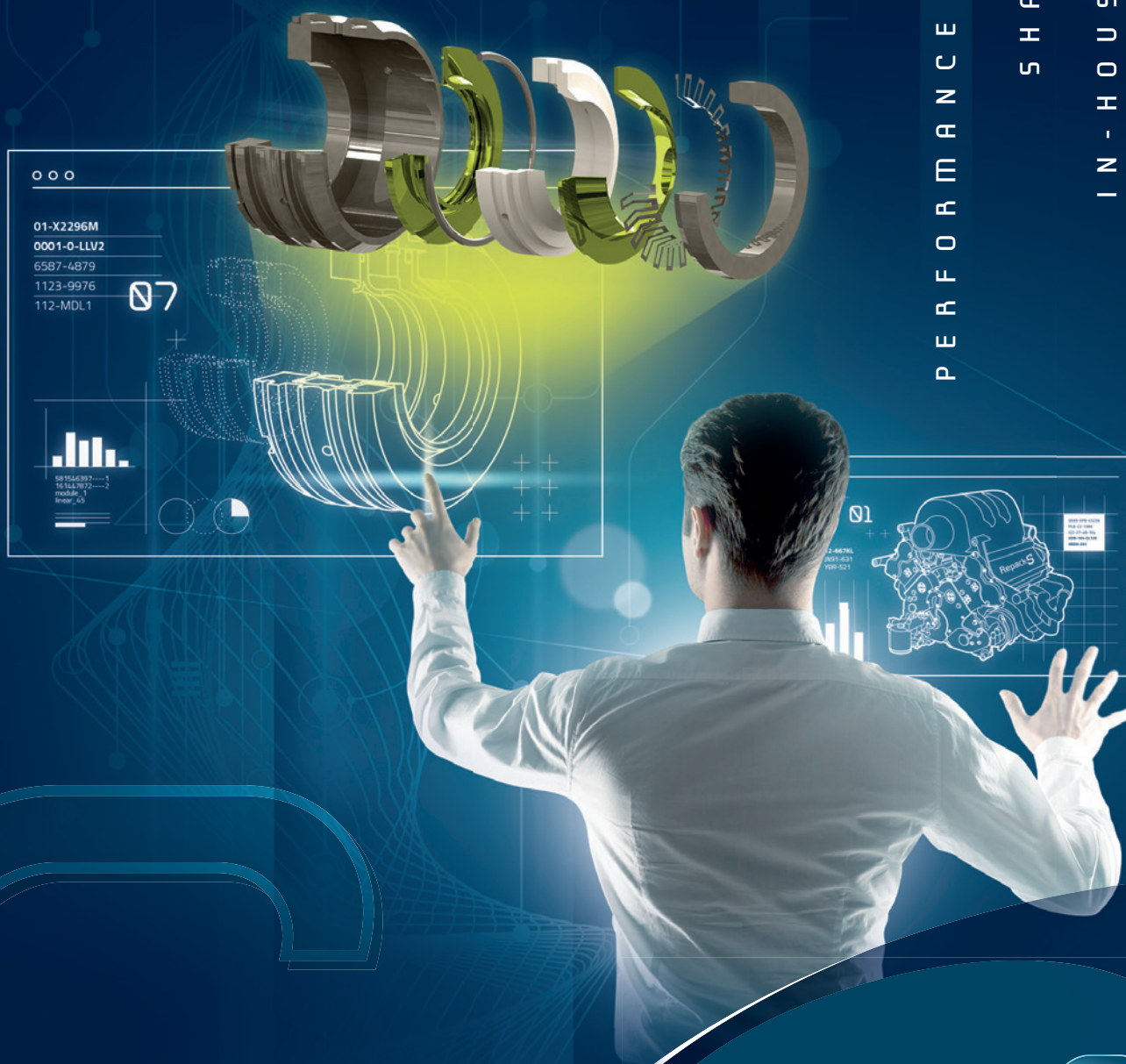
EXPERTISE

INNOVATION

PERFORMANCE OPTIMISATION

SHARED KNOWLEDGE

IN-HOUSE TESTING



Repack-S®

ALL YOU EXPECT
IN SEALING EXPERTISE

1 EXPERT HELP AT HAND

PROBLEM SOLVING & DETAILED ANALYSIS

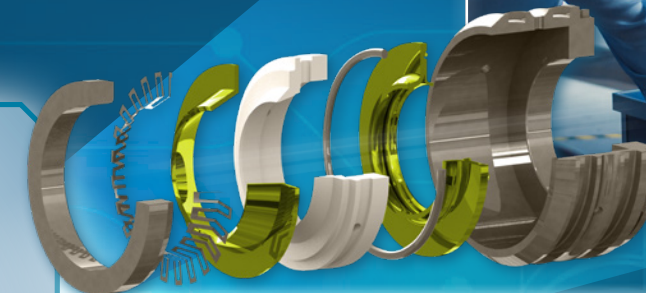
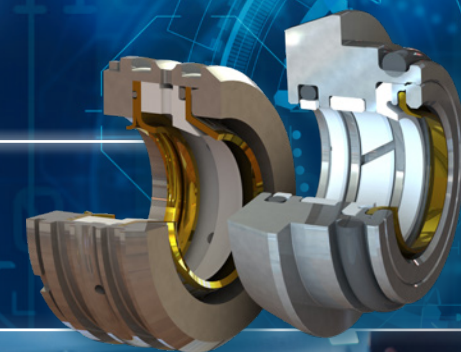
- Fact finding
- Data acquisition
- Failure root cause analysis
- Detailed (onsite) inspections
- Complete diagnostic



2 INNOVATIVE CREATIONS

STATE-OF-THE-ART DESIGN & DEVELOPMENT CAPABILITIES

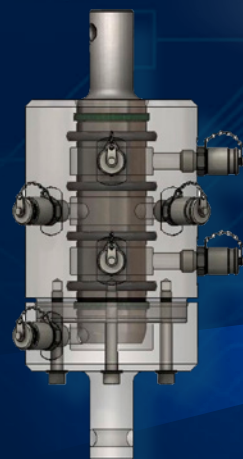
- Concept brief & set of performance targets
- Environmental constraints analysis
- Functional analysis
- Concept review vs. expectations
- Stage-gate decision process
- Full 3-D rendering



5 IN-HOUSE TESTING TO REDUCE RISKS & COSTS

TEST TO MINIMISE COSTS OF REACHING GOALS

- Sealing effectiveness
- System reactivity
- Extrusion resistance
- Endurance
- Friction / Power consumption
- System efficiency



A COMPREHENSIVE RANGE OF EXPERT ENGINEERING SERVICES TO HELP YOU...

- IMPROVE** knowledge & understanding
- ACHIEVE** performance & reliability goals
- ACCELERATE** product development
- REDUCE** uncertainties & risk of failure
- REDUCE** overall costs

3 ACCELERATE DEVELOPMENT CYCLE

PREDICT BEHAVIOUR & OPTIMISE PERFORMANCE

- During system assembly
- Determine contact pressures
- Evaluate stresses & strains in key components
- Integrate thermal considerations
- Anticipate impact of system vibrations



4 ENHANCE KNOWLEDGE

MATERIAL & SOLUTION CHARACTERISATION

- Tensile, compressive & relaxation behaviour from -100°C to +300°C
- Ageing characteristics
- Chemical compatibility
- Tribological properties
- Impact of hysteresis & shock loading

72.995
51.238
815
101146
XC270





Repack-S[®]

WWW.REPACK-S.COM

ALL YOU EXPECT
IN SEALING EXPERTISE

Follow us on [LinkedIn](#)

Repack-S

Z.I. du Bois Bernoux
71290 Cuisery | France

☎ +33 (0) 385 321 014

📠 +33 (0) 385 325 212

contact@repack-s.com

Paris •

• Lyon •

• Geneva

