

# & MATERIAL CHARACTERISATION SOLUTION TESTING LABORATORY

*There is nothing like physical testing of sealing and guiding solutions to validate their fitness for purpose.*

As this may not always be possible on existing equipment, we have created fully configurable test rigs to validate the performance, wear & aging characteristics of solutions.

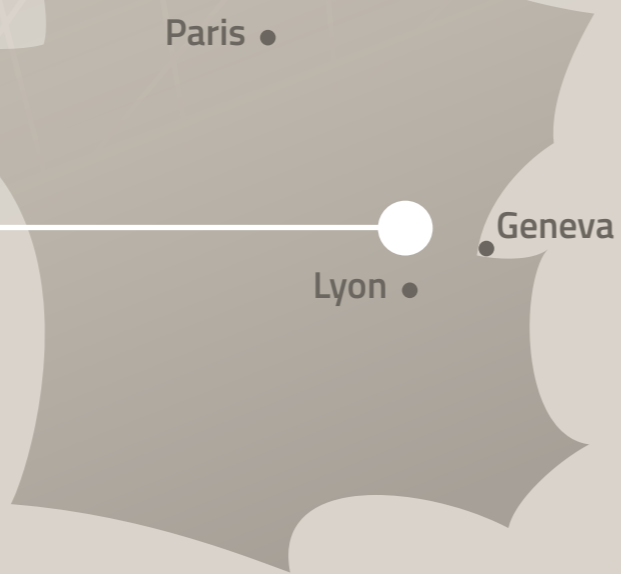
The following machines exist to "torture" shaft, piston and rod seals until failure:

- ✓ High-speed rotary test rigs
- ✓ Hydraulic ram like linear test rig
- ✓ High-pressure alternating swivel test rig
- ✓ Low-pressure alternating swivel test rig
- ✓ Extrusion test rig

## NO COMPROMISE QUALITY

Such painstaking attention to detail would be to no avail if we did not have stringent requirements on quality, certification and traceability in all aspects of the business.

*Fortunately, we do!*



## REPACK-S

Z.I. du Bois Bernoux  
71290 Cuisery | France

+33 (0) 385 321 014

+33 (0) 385 325 212

contact@repack-s.com

WWW.REPACK-S.COM

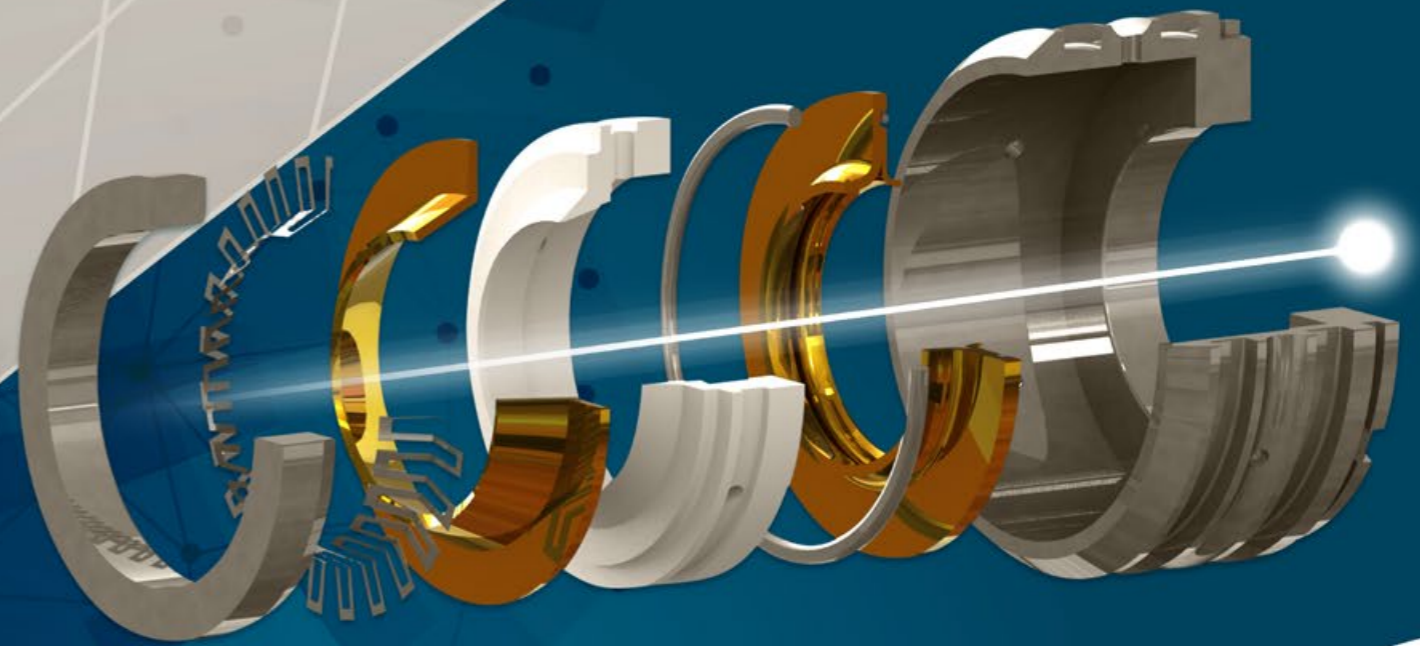
© Repack-S - 2017 | Crédits photos : Repack-S / Shutterstock | Design : Noir Symphonique | Impression : 52e Impressions | Ne pas jeter sur la voie publique



# IMAGINE

A TRULY INNOVATIVE PARTNER COMMITTED TO ENGINEERING EXCELLENCE IN

**DESIGN, MANUFACTURING & SUPPLY OF COMPLETE SEALING & SELF-LUBRICATED BEARING SOLUTIONS**







Founded in 1997, Repack-S is a sealing system and self-lubricated bearing solution specialist with many years of experience in a diverse range of industry sectors, such as :

- RENEWABLE ENERGY
- MACHINE TOOLS
- METALLURGY
- OIL & GAS
- BIOTECH
- & PHARMACEUTICALS
- FOOD & BEVERAGE PACKAGING

*Extending MTBF, optimising MTBM and lowering energy consumption are all common key drivers to achieve the lowest Cost Of Ownership of capital equipment.*

**If you are looking for ways to achieve these goals by maximising reliability, optimising efficiency, improving safety. Repack-S can support you!**

### TYPICAL SEALING APPLICATIONS INCLUDE:

- Rotating equipment (e.g. turbomachines)
- High-speed automated production lines and their ancillaries
- Valves, actuators of all kinds
- Heavy duty hydraulics & pneumatics
- Piston accumulators and dampers



We are **reactive** and **project-driven**.

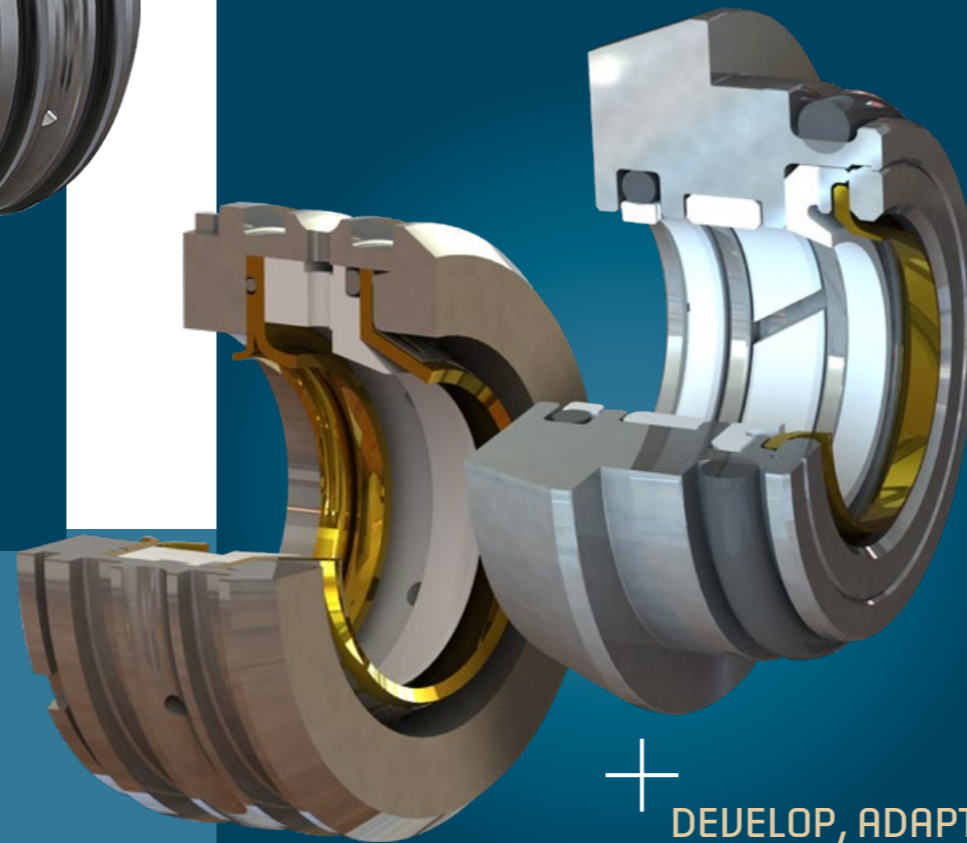
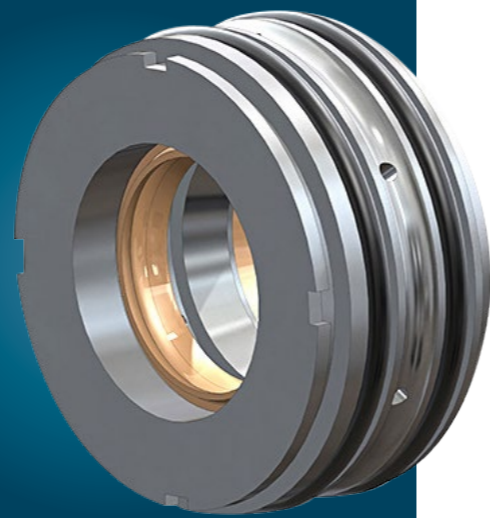
We **adapt** to our customers, not the opposite!

We endeavour to provide **short lead times** for everything!

**Science & strong Engineering skills** are core to our business.

We have a practical approach to **problem solving**.

We have an obsessive **attention to detail!**



## & EXPERTISE INNOVATION

Well specified parts can enhance efficiency and reliability, reduce energy consumption through lower friction, resulting in significantly reduced operating costs.

We recognise the critical role that our sealing and guiding solutions play in ensuring our customers' products perform reliably even in the most demanding environments.

Innovation in design and setting the standard for optimal performance in demanding applications are paramount for Repack-S.

### + DEVELOP, ADAPT, SUCCEED

We develop solutions that fit our customer's existing hardware (for example, grooves dimensions according to ISO 7425/1).

When necessary, we specify all hardware dimensions and help redesign part of the equipment to achieve the desired functionality.

### ENGINEERING TEAM

Repack-S draws on its extensive experience to **solve** – daily – **complex and diverse sealing problems** found in harsh environments.

We work closely with our customers to **develop complete sealing systems** that meet their most stringent requirements.

State-of-the-art modelling techniques as well as analytical tools allow us to **optimise seal geometries** and ensure our solutions not only **perform as expected** but also provide the **longest possible service lifetime!**

